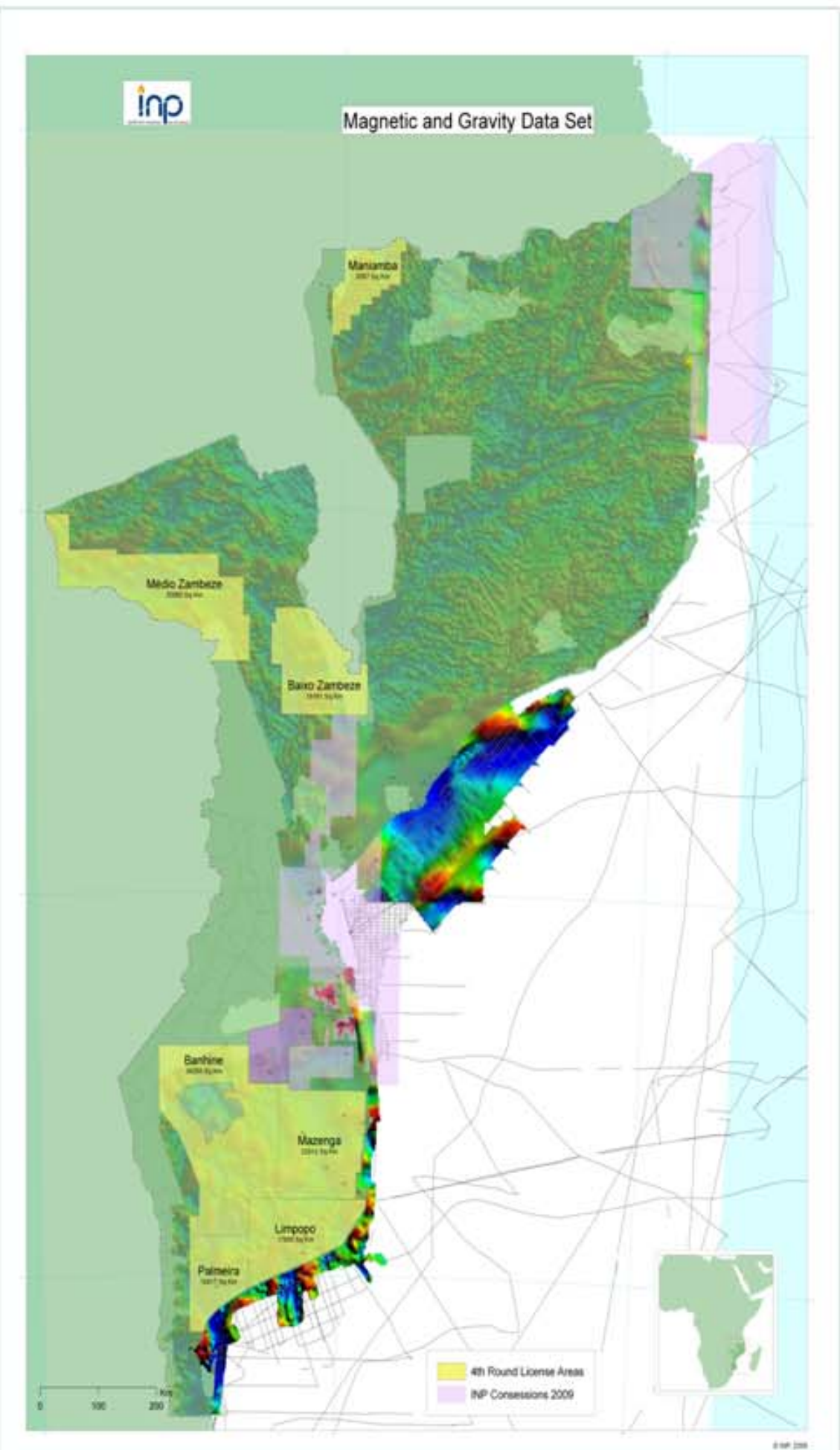




EXPLORATION HISTORY AND DATABASE

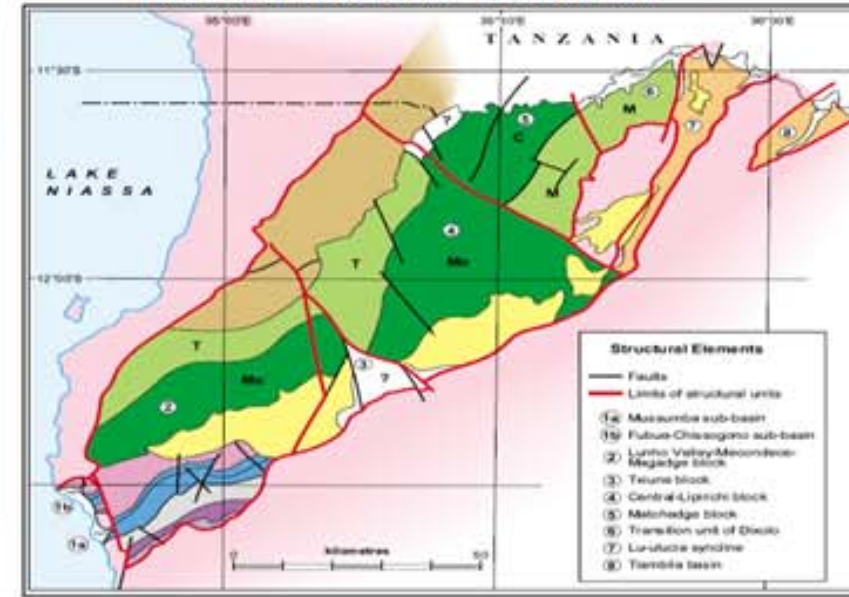


Maniamba Basin

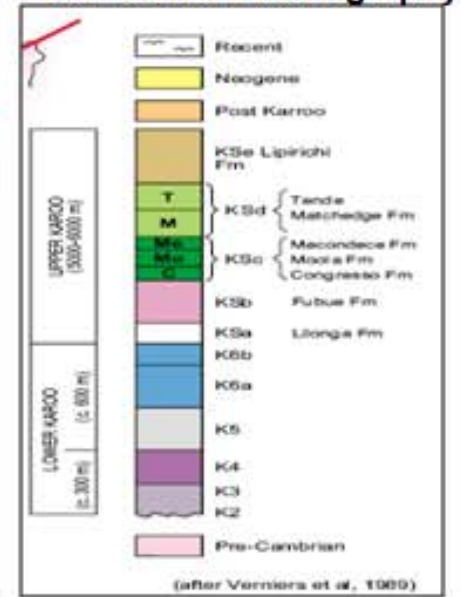
Exploration History

- Description from explores such as Livingstone 1862
- 1949-50 First descriptions of the Basin and first studies of coal outcrops
- 1977-80 Geological survey mapping and drilling of 17 Exploration wells for Coal

Structural Elements – Maniamba



Generalised Stratigraphy

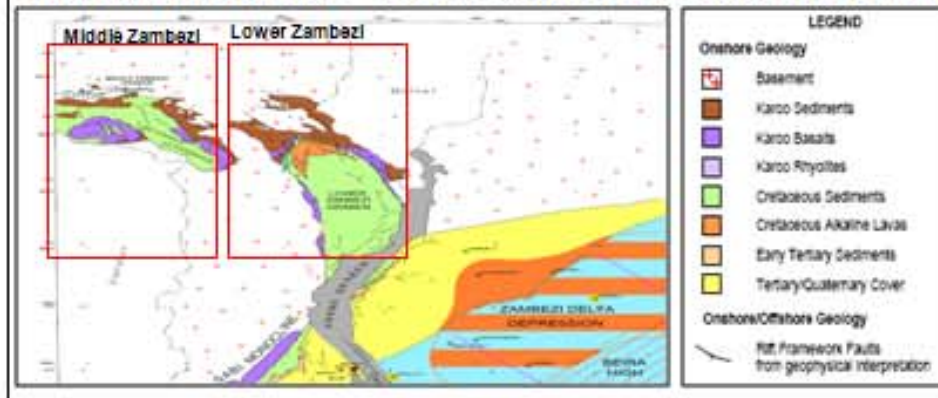


Lower and Middle Zambezi Graben

Exploration History

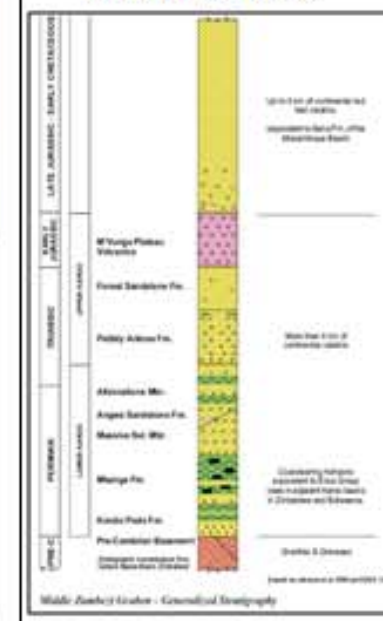
- Aeromagnetic survey by Hunting Geology and Geophysics during the 80's

Structural Elements – Middle and Lower Zambezi Graben

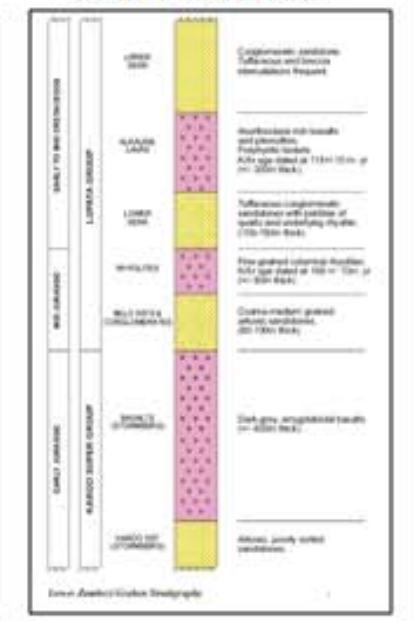


Generalized Stratigraphy

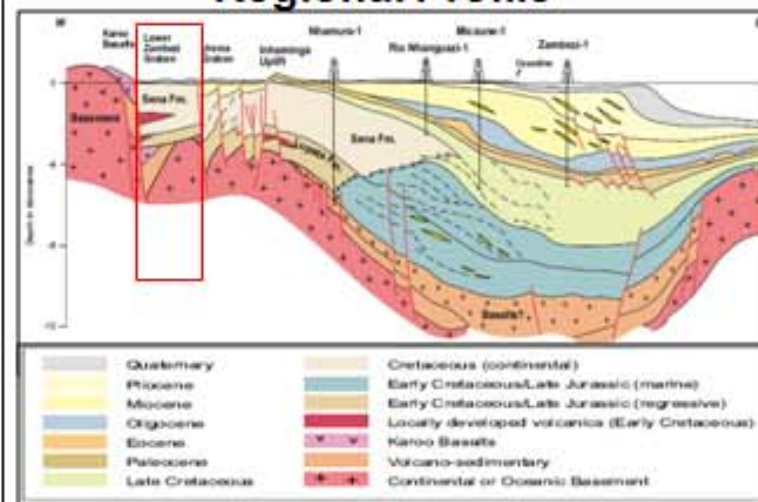
Middle Zambezi



Lower Zambezi



Regional Profile



Play/Prospect Summary Lower Zambezi Graben

Petroleum Systems			Exploration Plays			Tested / Proven
Source Rocks	Maturity	Petroleum Occurrences	Reservoirs (Top Seals)	Traps	Timing	
Upper Jurassic / Lower Cretaceous lacustrine shales (proliferated)	Unknown but likely to be ranging. Dry gas mature in deeper areas.	Inhambane gas seep and wells	Lupata / Sena Basalt / lacustrine sandstones	RR fault-blocks	Good - early formed	1
				Inference fault-blocks (e.g. Inhambane Lipit)	Poor - late formed	2