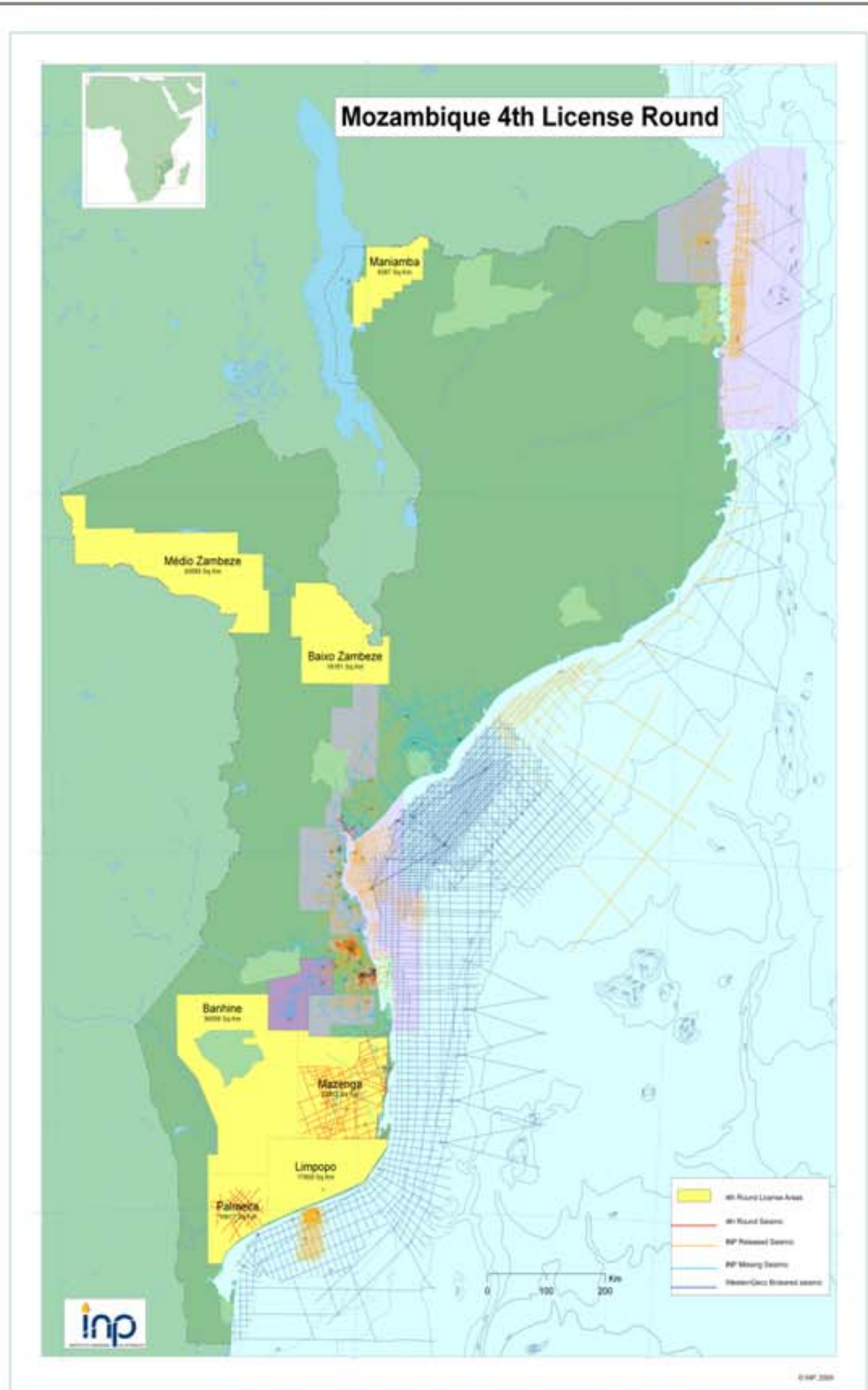




EXPLORATION HISTORY AND DATABASE



Mazenga Area

Exploration History

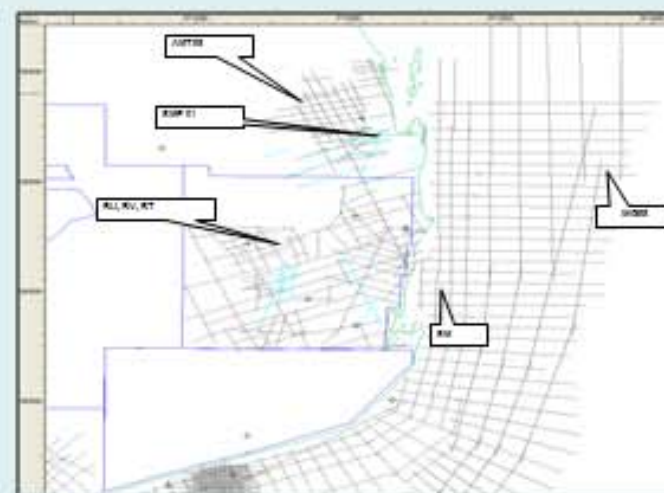
- 1958 Mozambique Gulf Oil Company with Pan American began large scale exploration
- Rights released to Amoco (Formerly Pan American)- 3 unsuccessful wells until 1961 (Domo-1, Balane-1 & Zandemela-1) then focus shifted to Pande
- 4th well drilled in 1967 was dry (Pomene-1)
- 1967- 1972 Elf Aquitaine-Acquisition of seismic North of Sunray, Mazenga Graben identified, 3 wells drilled- dry (Funhaloro-1, Nhachengue-1 & Mazenga Sud-1)
- 1981 Activity switched to offshore seismic acquisition by Westerns (8, 800km in Limpopo Block), also grav mag
- 1983 activity switched to Chidenguela Graben & Xai Xai Graben
- 1997 MOU was granted to SASOL expired in 1997

Exploration Database

- 5 wells within block Domo 1, Pomene 1, Nhachengue, Mazenga Sud & Funhaloro. Digital Log data generated from films in 1985 / 2000.
- Digital seismic data (SEG Y) has been reconstructed to SEG Y from sepi film and paper copies
- Proximal to Pande and Temane

Seismic Dataset

- BU, BT & BV acquired by Elf- Only reconstructed SEG Y of varying quality
- Offshore SM and WG 98 lines
- AMT 98 and SME 01 within Pande/ Temane PSC



Palmeira Area

Exploration History

- 1967- 1971 the Sunray Mozambique Oil Company operator with Clark Mozambique Oil Company & Skelly Mozambique Company
- 1968 aeromagnetic data was acquired onshore with offshore magnetic and seismic acquisition
- 1970- 6 offshore prospects drilled, without success
- 1971- 2 dry wells onshore (Macia 1 and Palmeira)
- 1972- Acquisition of onshore 2D

Exploration Database

- 2 wells within the Area, Palmeira-1 and Macia NW-1
- Sunray 1, 2 & 3 are proximal wells offshore
- Reconstructed SU SEG Y only available seismic data in block (though positioning of this data may be inaccurate)
- Digital seismic data (SEG Y) has been reconstructed to SEG Y from sepi film and paper copies
- SM & BP85 are proximal offshore surveys

Well Results

- Sunray 1-** Reservoirs in Domo & Maputo- good TOCs also (immature)
- Sunray 3-** Reservoir- L Grudja, Domo, Maputo. High TOCs in Maputo fair in Domo
- Sunray 7-** Inconclusive well, though High TOCs again in Maputo

